

8

7

6

5

4

3

2

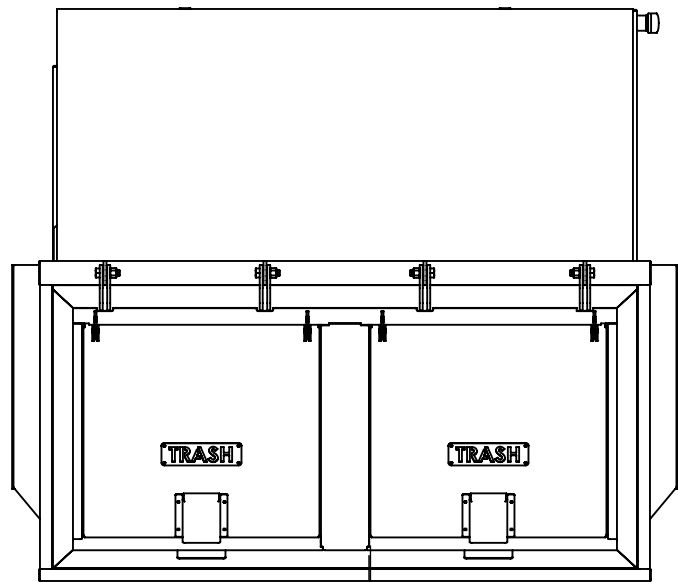
1

D

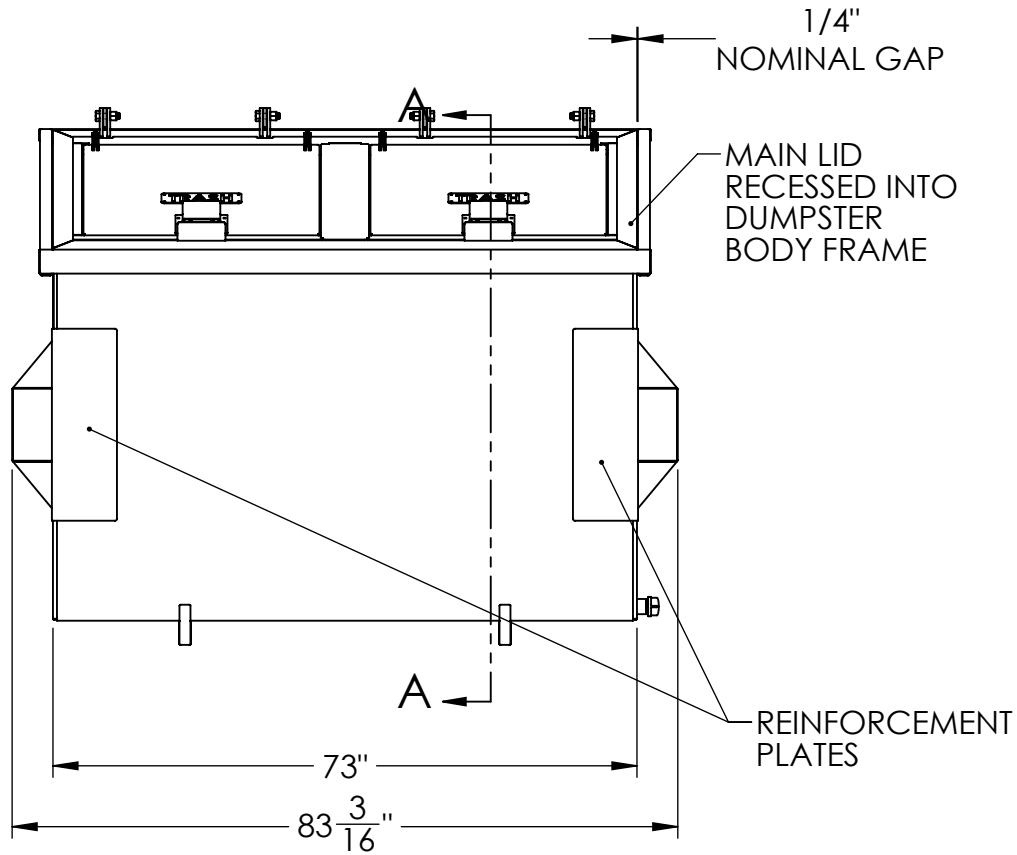
C

B

A



3/16" NOMINAL GAP



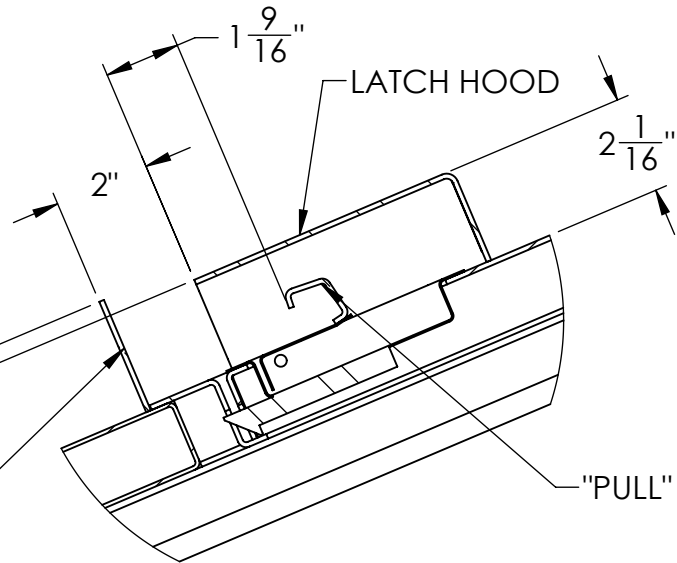
1/4" NOMINAL GAP

MAIN LID RECESSED INTO DUMPSTER BODY FRAME

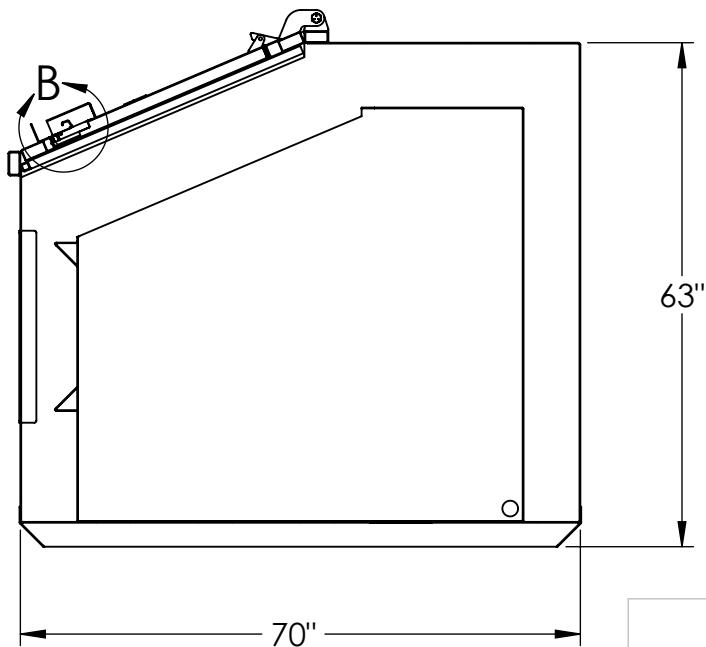
REINFORCEMENT PLATES

3/8" NOMINAL  
x 3 SIDES

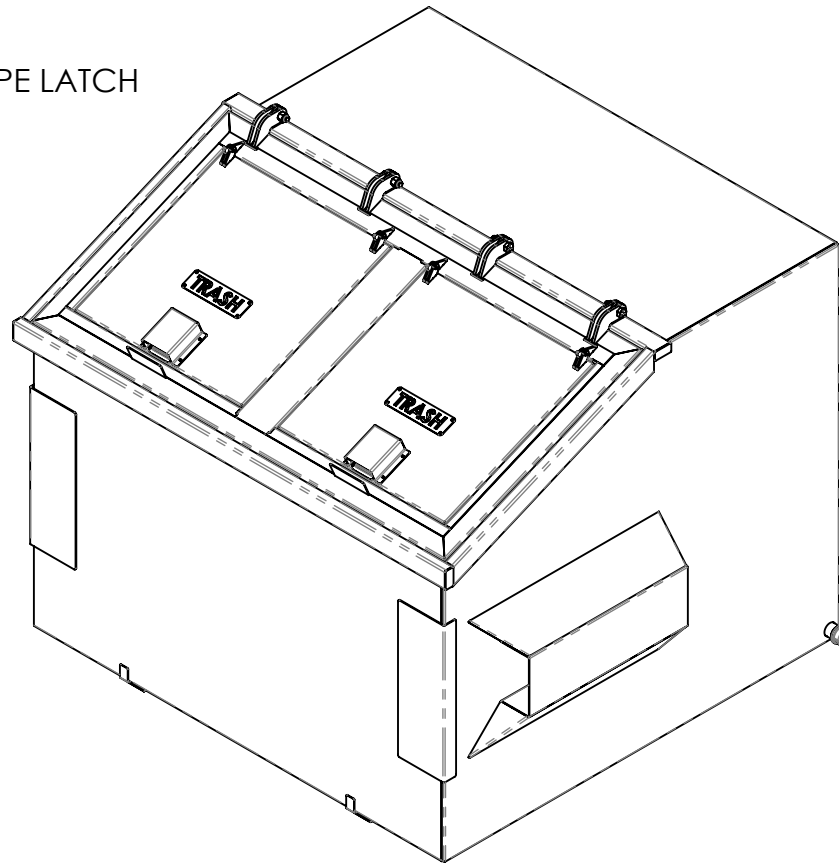
LATCH GUARD



DETAIL B



SECTION A-A



D

C

B

A

8

7

6

5

4

3

2

1

PROPRIETARY AND CONFIDENTIAL

THE INFORMATION CONTAINED IN THIS DRAWING IS THE SOLE PROPERTY OF PREMIER POWDER COATING. ANY REPRODUCTION IN PART OR AS A WHOLE WITHOUT THE WRITTEN PERMISSION OF PREMIER POWDER COATING IS PROHIBITED.

UNLESS OTHERWISE SPECIFIED:

DIMENSIONS ARE IN INCHES  
TOLERANCES:  
FRACTIONAL  $\pm 1/16"$   
ANGULAR:  $.5^\circ$   
TWO PLACE DECIMAL  $\pm .06$   
THREE PLACE DECIMAL  $\pm .005$

MATERIAL

FINISH

DO NOT SCALE DRAWING

NAME

DATE

DRAWN

SEC

6/17/2019

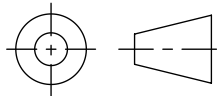
CHECKED

ENG APPR.

MFG APPR.

Q.A.

THIRD ANGLE PROJECTION



TITLE:

SIZE

**B**

DWG. NO.

**T600-DDT-CERT**

REV

**A**

WEIGHT:

TOTAL SHEETS: 1